

Use of Force

Monitoring Forms : 1st Jan 2019 to 31 Mar 2019 : 2121 respondents

Section One : Staff Details

Rank / role

	Number	% of total	
NPCC	0	0.0%	0
Chief Superintendent	0	0.0%	0
Superintendent	0	0.0%	0
Chief Inspector	0	0.0%	0
Inspector	9	0.4%	9
Sergeant	158	7.5%	158
Constable	1,847	87.1%	1,847
Custody Detention Officer	30	1.4%	30
PCSO	1	0.0%	1
Police Staff	3	0.1%	3
Special Constable	68	3.2%	68
Other	4	0.2%	4
<i>No reply</i>	1		
TOTAL (excl. no reply)	2,120		

Are you a detective?

	Number	% of total	
Yes	14	0.7%	14
No	2,083	99.3%	2,083
<i>Not asked / no reply</i>	24		
TOTAL (excl. n/a and n/r)	2,097		

Your gender?

	Number	% of total	
Male	1,737	81.9%	1,737
Female	380	17.9%	380
Transgender	2	0.1%	2
Do not identify as any above	1	0.0%	1
<i>No reply</i>	1		
TOTAL (excl. no reply)	2,120		

Use of Force

Monitoring Forms : 1st Jan 2019 to 31 Mar 2019 : 2121 respondents

Section One : Staff Details (continued)

Your age?

	Number	% of total	
Under 20	1	0.0%	1
20 - 24	189	8.9%	189
25 - 29	518	24.4%	518
30 - 34	462	21.8%	462
35 - 39	319	15.0%	319
40 - 44	280	13.2%	280
45 - 49	215	10.1%	215
50 - 54	105	5.0%	105
55 - 59	29	1.4%	29
60 and over	2	0.1%	2
<i>No reply</i>	1		
TOTAL (excl. no reply)	2,120		

Your length of service?

	Number	% of total	
0 - 6 months	228	10.7%	228
7 - 12 months	183	8.6%	183
13 - 23 months	191	9.0%	191
2 - 5 years	549	25.9%	549
6 - 10 years	236	11.1%	236
11 - 15 years	265	12.5%	265
More than 15 years	469	22.1%	469
TOTAL RESPONDENTS	2,121		

Length of time since personal safety training?

	Number	% of total	
0 - 6 months	1,045	49.3%	1,045
7 - 12 months	931	43.9%	931
13 - 23 months	135	6.4%	135
2 - 5 years	10	0.5%	10
More than 5 years	0	0.0%	0
TOTAL RESPONDENTS	2,121		

Use of Force

Monitoring Forms : 1st Jan 2019 to 31 Mar 2019 : 2121 respondents

Section One : Staff Details (continued)

What is your current department?

	Number	% of total	
Patrol	1,637	77.2%	1,637
Neighbourhood	148	7.0%	148
Criminal Justice	101	4.8%	101
Tri-Force	105	5.0%	105
Intelligence and Tasking	0	0.0%	0
Operations	95	4.5%	95
Investigations	8	0.4%	8
Special Constabulary	21	1.0%	21
CLaD	2	0.1%	2
Integrated Offender Mgement	0	0.0%	0
Detainee Investigation	0	0.0%	0
Staff Office	1	0.0%	1
Other Regional Collaboration	0	0.0%	0
Other	3	0.1%	3
<i>No reply</i>	0		
TOTAL (excl. no reply)	2,121		

Use of Force

Monitoring Forms : 1st Jan 2019 to 31 Mar 2019 : 2121 respondents

Section Two : Incident Level Characteristics

Incident Location Type *[Please tick all that apply]*

NOTE: multi-choice so may sum to greater than 100%	Number	% of respondents	
Street / highway	1,201	56.6%	1,201
Public transport	6	0.3%	6
Retail premises	93	4.4%	93
Open ground (e.g. park etc)	178	8.4%	178
Licensed premises	68	3.2%	68
Sports or event stadia	26	1.2%	26
Hospital / A&E (non-mental health)	104	4.9%	104
Mental health setting	58	2.7%	58
Police vehicle with prisoner/cage	109	5.1%	109
Police vehicle without prisoner/cage	94	4.4%	94
Dwelling	524	24.7%	524
Police station (excl. custody block)	33	1.6%	33
Custody block	276	13.0%	276
Ambulance	48	2.3%	48
Other	97	4.6%	97
TOTAL RESPONDENTS	2,121		

On which Policing Area was this use of force carried out?

	Number	% of total	
Bristol Policing Area	904	42.6%	904
North East Policing Area	322	15.2%	322
Somerset Policing Area	890	42.0%	890
Out of Force	5	0.2%	5
TOTAL RESPONDENTS	2,121		

Primary conduct of subject / behaviour:

	Number	% of total	
Compliant	449	21.2%	449
Verbal resistance/gestures	294	13.9%	294
Passive resistance	179	8.4%	179
Active resistance	549	25.9%	549
Aggressive resistance	523	24.7%	523
Serious/aggravated resistance	127	6.0%	127
TOTAL RESPONDENTS	2,121		

Use of Force

Monitoring Forms : 1st Jan 2019 to 31 Mar 2019 : 2121 respondents

Section Two : Incident Level Characteristics (continued)

Were you assaulted by the subject?

	Number	% of total	
Yes	177	8.3%	177
No	1,944	91.7%	1,944
TOTAL RESPONDENTS	2,121		

Were you threatened with a weapon?

	Number	% of total	
No	1,699	80.1%	1,699
No but info./intel. possible weapon	344	16.2%	344
Firearm	6	0.3%	6
Bladed weapon / object	24	1.1%	24
Pointed weapon / object	7	0.3%	7
Missile / object thrown	16	0.8%	16
Blunt weapon / object	15	0.7%	15
Other	10	0.5%	10
TOTAL RESPONDENTS	2,121		

IF ASSAULTED: Were you assaulted with a weapon?

	Number	% of total	
No	166	94.9%	166
Firearm	2	1.1%	2
Bladed weapon / object	1	0.6%	1
Pointed weapon / object	0	0.0%	0
Missile / object thrown	1	0.6%	1
Blunt weapon / object	2	1.1%	2
Other	3	1.7%	3
<i>No reply</i>	2		
TOTAL (excl. no reply)	175		

IF ASSAULTED: Were you spat at?

	Number	% of total	
Yes	30	17.0%	30
No	146	83.0%	146
<i>No reply</i>	1		
TOTAL (excl. no reply)	176		

Use of Force

Monitoring Forms : 1st Jan 2019 to 31 Mar 2019 : 2121 respondents

Section Two : Incident Level Characteristics (continued)

Impact factors: *[Please tick all that apply]*

NOTE: multi-choice so may sum to greater than 100%	Number	% of respondents	
Possession of a weapon	400	19.3%	400
Alcohol	1,057	50.9%	1,057
Drugs	776	37.4%	776
Mental health	726	35.0%	726
Prior knowledge	555	26.7%	555
Size / gender / build	866	41.7%	866
Acute Behavioural Disorder	33	1.6%	33
Crowd	223	10.7%	223
Other	465	22.4%	465
<i>No reply</i>	44		
TOTAL RESPONDENTS	2,077		

Reason for using force: *[Please tick all that apply]*

NOTE: multi-choice so may sum to greater than 100%	Number	% of total	
Protect self	1,850	87.2%	1,850
Protect public	956	45.1%	956
Protect subject	1,136	53.6%	1,136
Protect other officers	1,605	75.7%	1,605
Prevent offence	842	39.7%	842
Secure evidence	366	17.3%	366
Effect search	547	25.8%	547
Effect arrest	1,152	54.3%	1,152
Method of entry	22	1.0%	22
Remove handcuffs	151	7.1%	151
Prevent harm	937	44.2%	937
Prevent escape	1,077	50.8%	1,077
Other	74	3.5%	74
TOTAL RESPONDENTS	2,121		

Use of Force

Monitoring Forms : 1st Jan 2019 to 31 Mar 2019 : 2121 respondents

Section Two : Incident Level Characteristics (continued)

What main duty were you performing at the time of the incident?

	Number	% of total	
Mobile patrol	1,716	80.9%	1,716
Foot patrol	81	3.8%	81
Custody	123	5.8%	123
Roads policing	20	0.9%	20
CID	6	0.3%	6
ARV	68	3.2%	68
PSU / public order	43	2.0%	43
Surveillance	4	0.2%	4
Dog handler duty	4	0.2%	4
Mounted section duties	8	0.4%	8
Off duty	2	0.1%	2
Other	46	2.2%	46
TOTAL RESPONDENTS	2,121		

Were you single crewed at the time of the incident where you had to use force?

	Number	% of total	
Yes	237	11.2%	237
No	1,884	88.8%	1,884
TOTAL RESPONDENTS	2,121		

Are you a specially trained Conducted Energy Device officer?

	Number	% of total	
Yes	621	29.3%	621
No	1,500	70.7%	1,500
TOTAL RESPONDENTS	2,121		

IF YES: Were you carrying C.E.D. at the time of the incident?

	Number	% of total	
Yes	561	90.6%	561
No	58	9.4%	58
<i>No reply</i>	2		
TOTAL (excl. no reply)	619		

Use of Force

Monitoring Forms : 1st Jan 2019 to 31 Mar 2019 : 2121 respondents

Section Two : Incident Level Characteristics (continued)

Which of the following tactics did you use? [Please tick all that apply]

NOTE: multi-choice so may sum to greater than 100%	Number	% of respondents	
Tactical communication	1,865	87.9%	1,865
Compliant handcuffing	908	42.8%	908
Non-compliant handcuffing	723	34.1%	723
Unarmed skills	818	38.6%	818
Ground restraint	507	23.9%	507
Dog deployed	10	0.5%	10
Dog bite	9	0.4%	9
Baton drawn	51	2.4%	51
Baton used	24	1.1%	24
Irritant spray - PAVA drawn	127	6.0%	127
Irritant spray - PAVA used	103	4.9%	103
Limb / body restraints	92	4.3%	92
Spit guard	68	3.2%	68
Shield	8	0.4%	8
C.E.D.	149	7.0%	149
Firearm aimed	25	1.2%	25
Firearm fired	2	0.1%	2
AEP aimed	15	0.7%	15
AEP fired	0	0.0%	0
Other / improvised	69	3.3%	69
TOTAL RESPONDENTS	2,121		

For each tactic used, please indicate whether it was effective:

<i>Tactical communication</i>	Number	% of total	
Yes	808	41.4%	808
No	1,144	58.6%	1,144
TOTAL RESPONDENTS	1,952		

<i>Compliant handcuffing</i>	Number	% of total	
Yes	820	90.3%	820
No	88	9.7%	88
TOTAL RESPONDENTS	908		

Use of Force

Monitoring Forms : 1st Jan 2019 to 31 Mar 2019 : 2121 respondents

Section Two : Incident Level Characteristics (continued)

For each tactic used, please indicate whether it was effective:

<i>Non-compliant handcuffing</i>		Number	% of total	
Yes		648	89.6%	648
No		75	10.4%	75
TOTAL RESPONDENTS		723		
<i>Unarmed skills</i>		Number	% of total	
Yes		717	87.7%	717
No		101	12.3%	101
TOTAL RESPONDENTS		818		
<i>Ground restraint</i>		Number	% of total	
Yes		485	95.7%	485
No		22	4.3%	22
TOTAL RESPONDENTS		507		
<i>Dog deployed</i>		Number	% of total	
Yes		5	50.0%	5
No		5	50.0%	5
TOTAL RESPONDENTS		10		
<i>Dog bite</i>		Number	% of total	
Yes		9	100.0%	9
No		0	0.0%	0
TOTAL RESPONDENTS		9		
<i>Baton drawn</i>		Number	% of total	
Yes		37	72.5%	37
No		14	27.5%	14
TOTAL RESPONDENTS		51		
<i>Baton used</i>		Number	% of total	
Yes		23	95.8%	23
No		1	4.2%	1
TOTAL RESPONDENTS		24		

Use of Force

Monitoring Forms : 1st Jan 2019 to 31 Mar 2019 : 2121 respondents

Section Two : Incident Level Characteristics (continued)

For each tactic used, please indicate whether it was effective:

<i>Irritant spray - PAVA drawn</i>	Number	% of total	
Yes	64	50.4%	64
No	63	49.6%	63
TOTAL RESPONDENTS	127		
<i>Irritant spray - PAVA used</i>	Number	% of total	
Yes	89	86.4%	89
No	14	13.6%	14
TOTAL RESPONDENTS	103		
<i>Limb / body restraints</i>	Number	% of total	
Yes	90	97.8%	90
No	2	2.2%	2
TOTAL RESPONDENTS	92		
<i>Spit guard</i>	Number	% of total	
Yes	65	95.6%	65
No	3	4.4%	3
TOTAL RESPONDENTS	68		
<i>Shield</i>	Number	% of total	
Yes	6	75.0%	6
No	2	25.0%	2
TOTAL RESPONDENTS	8		

Use of Force

Monitoring Forms : 1st Jan 2019 to 31 Mar 2019 : 2121 respondents

Section Two : Incident Level Characteristics (continued)

For each tactic used, please indicate whether it was effective:

<i>C.E.D.</i>	Number	% of total	
Yes	128	85.9%	128
No	21	14.1%	21
TOTAL RESPONDENTS	149		
<i>Firearm aimed</i>	Number	% of total	
Yes	22	88.0%	22
No	3	12.0%	3
TOTAL RESPONDENTS	25		
<i>Firearm fired</i>	Number	% of total	
Yes	2	100.0%	2
No	0	0.0%	0
TOTAL RESPONDENTS	2		
<i>AEP aimed</i>	Number	% of total	
Yes	14	93.3%	14
No	1	6.7%	1
TOTAL RESPONDENTS	15		
<i>AEP fired</i>	Number	% of total	
Yes	0	<i>n/a</i>	0
No	0	<i>n/a</i>	0
TOTAL RESPONDENTS	0		
<i>Other / improvised</i>	Number	% of total	
Yes	58	84.1%	58
No	11	15.9%	11
TOTAL RESPONDENTS	69		

Use of Force

Monitoring Forms : 1st Jan 2019 to 31 Mar 2019 : 2121 respondents

Section Two : Incident Level Characteristics (continued)

C.E.D. ONLY

For each use of force, which area(s) was the force used on?

NOTE: Refer to diagram on next page

NOTE: multi-choice so may sum to greater than 100%	Number	% of total	
1	28	18.8%	28
2	8	5.4%	8
3	3	2.0%	3
4	8	5.4%	8
5	4	2.7%	4
6	0	0.0%	0
7	3	2.0%	3
8	11	7.4%	11
9	0	0.0%	0
10	0	0.0%	0
11	1	0.7%	1
12	9	6.0%	9
13	9	6.0%	9
14	5	3.4%	5
15	3	2.0%	3
A	1	0.7%	1
B	4	2.7%	4
C	2	1.3%	2
D	1	0.7%	1
E	2	1.3%	2
F	1	0.7%	1
G	20	13.4%	20
H	11	7.4%	11
J	1	0.7%	1
K	1	0.7%	1
<i>No reply</i>	95		
TOTAL RESPONDENTS	149		

Use of Force

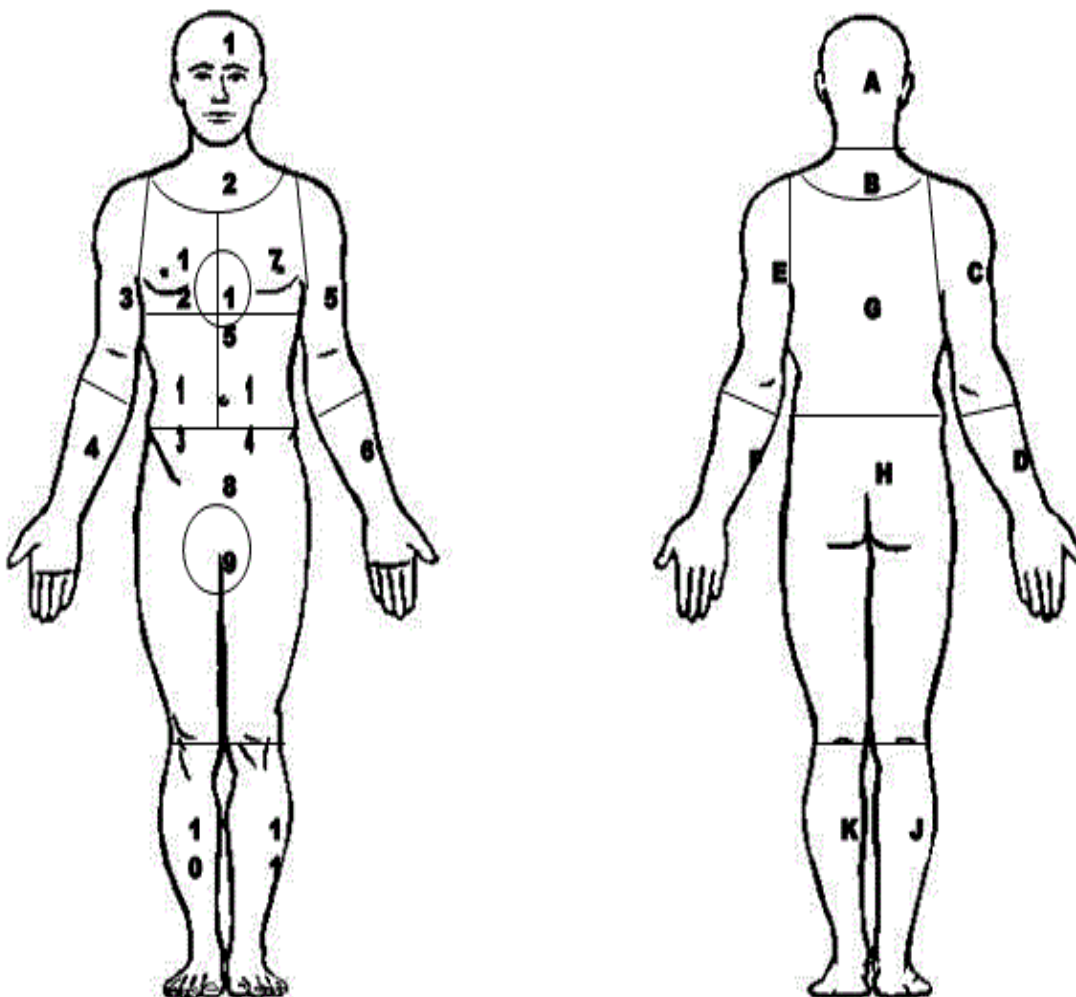
Monitoring Forms : 1st Jan 2019 to 31 Mar 2019 : 2121 respondents

Section Two : Incident Level Characteristics (continued)

C.E.D. ONLY

For each use of force, which area(s) was the force used on?

Body Diagram



Use of Force

Monitoring Forms : 1st Jan 2019 to 31 Mar 2019 : 2121 respondents

Section Two : Incident Level Characteristics (continued)

C.E.D. ONLY

Please select C.E.D. device:

	Number	% of total	
X26 TASER	24	16.4%	24
X2 TASER	122	83.6%	122
<i>No reply</i>	3		
TOTAL (excl. no reply)	146		

Please tick all uses that apply: *[Please tick all that apply]*

	Number	% of respondents	
NOTE: multi-choice so may sum to greater than 100%			
Drawn	143	96.0%	143
Aimed	112	75.2%	112
Arced	12	8.1%	12
Red-dotted	100	67.1%	100
Drive-stun	2	1.3%	2
Drive-stun repeat application	4	2.7%	4
Angled drive-stun	1	0.7%	1
Fired	21	14.1%	21
<i>No reply</i>	0		
TOTAL RESPONDENTS	149		

FIRED: Please tick all that apply:

	Number	% of total	
NOTE: multi-choice so may sum to greater than 100%			
Five second cycle interrupted	8	47.1%	8
Repeat cycle (same cartridge)	7	41.2%	7
Cycle extended beyond 5 secs.	2	11.8%	2
Miss with one probe	7	41.2%	7
Miss with both probes	1	5.9%	1
<i>No reply</i>	4		
TOTAL RESPONDENTS	17		

Use of Force

Monitoring Forms : 1st Jan 2019 to 31 Mar 2019 : 2121 respondents

Section Three : Designated Public Order Event

Was your use of force part of a designated public order event?

	Number	% of total	
Yes	49	2.3%	49
No	2,072	97.7%	2,072
TOTAL RESPONDENTS	2,121		

Against how many people?

	Number	% of total	
1 person	4	8.5%	4
2 - 5 people	6	12.8%	6
6 - 10 people	3	6.4%	3
11+ people	34	72.3%	34
<i>No reply</i>	2		
TOTAL (excl. no reply)	47		

Which of the following tactics did you use? [Please tick all that apply]

	Number	% of respondents	
NOTE: multi-choice so may sum to greater than 100%			
Tactical communication	48	98.0%	48
Unarmed skills	29	59.2%	29
Dog deployed	5	10.2%	5
Dog bite	5	10.2%	5
Baton drawn	38	77.6%	38
Baton used	16	32.7%	16
Irritant spray - PAVA drawn	0	0.0%	0
Irritant spray - PAVA used	0	0.0%	0
Shield tactics	0	0.0%	0
Taser used	0	0.0%	0
AEP used	0	0.0%	0
Firearm aimed	0	0.0%	0
Firearm fired	0	0.0%	0
Other / improvised	5	10.2%	5
TOTAL RESPONDENTS	49		

Use of Force

Monitoring Forms : 1st Jan 2019 to 31 Mar 2019 : 2121 respondents

Section Three : Designated Public Order Event (continued)

For each tactic used, please indicate whether it was effective:

<i>Tactical communication</i>		Number	% of total	
Yes		9	18.8%	9
No		39	81.3%	39
TOTAL RESPONDENTS		48		
<i>Unarmed skills</i>		Number	% of total	
Yes		24	82.8%	24
No		5	17.2%	5
TOTAL RESPONDENTS		29		
<i>Dog deployed</i>		Number	% of total	
Yes		1	20.0%	1
No		4	80.0%	4
TOTAL RESPONDENTS		5		
<i>Dog bite</i>		Number	% of total	
Yes		5	100.0%	5
No		0	0.0%	0
TOTAL RESPONDENTS		5		
<i>Baton drawn</i>		Number	% of total	
Yes		29	76.3%	29
No		9	23.7%	9
TOTAL RESPONDENTS		38		
<i>Baton used</i>		Number	% of total	
Yes		15	100.0%	15
No		0	0.0%	0
TOTAL RESPONDENTS		15		

Use of Force

Monitoring Forms : 1st Jan 2019 to 31 Mar 2019 : 2121 respondents

Section Three : Designated Public Order Event (continued)

For each tactic used, please indicate whether it was effective:

<i>Irritant spray - PAVA drawn</i>	Number	% of total	
Yes	0	n/a	0
No	0	n/a	0
TOTAL RESPONDENTS	0		

<i>Irritant spray - PAVA used</i>	Number	% of total	
Yes	0	n/a	0
No	0	n/a	0
TOTAL RESPONDENTS	0		

<i>Shield tactics</i>	Number	% of total	
Yes	0	n/a	0
No	0	n/a	0
TOTAL RESPONDENTS	0		

<i>Taser used</i>	Number	% of total	
Yes	0	n/a	0
No	0	n/a	0
TOTAL RESPONDENTS	0		

<i>AEP used</i>	Number	% of total	
Yes	0	n/a	0
No	0	n/a	0
TOTAL RESPONDENTS	0		

<i>Firearm aimed</i>	Number	% of total	
Yes	0	n/a	0
No	0	n/a	0
TOTAL RESPONDENTS	0		

<i>Firearm fired</i>	Number	% of total	
Yes	0	n/a	0
No	0	n/a	0
TOTAL RESPONDENTS	0		

<i>Other / improvised</i>	Number	% of total	
Yes	5	100.0%	5
No	0	0.0%	0
TOTAL RESPONDENTS	5		

Use of Force

Monitoring Forms : 1st Jan 2019 to 31 Mar 2019 : 2121 respondents

Section Four : Subject Details

Gender of subject: (*officer perceived*)

	Number	% of total	
Male	1,703	82.5%	1,703
Female	359	17.4%	359
Transgender	1	0.0%	1
<i>No reply</i>	9		
TOTAL (excl. no reply)	2,063		

Age of subject: (*officer perceived*)

	Number	% of total	
0-10	2	0.2%	2
11-17	104	8.3%	104
18-34	767	61.2%	767
35-49	300	23.9%	300
50-64	77	6.1%	77
65 & over	4	0.3%	4
<i>No reply</i>	818		
TOTAL (excl. no reply)	1,254		

Ethnicity of subject: (*officer perceived*)

	Number	% of total	
White	1,739	84.3%	1,739
Black (or Black British)	183	8.9%	183
Asian (or Asian British)	41	2.0%	41
Chinese	1	0.0%	1
Mixed	78	3.8%	78
Other	10	0.5%	10
Don't know	10	0.5%	10
<i>No reply</i>	10		
TOTAL (excl. no reply)	2,062		

Is the subject physically disabled? (*officer perceived*)

	Number	% of total	
Yes	18	0.9%	18
No	2,050	99.1%	2,050
<i>No reply</i>	4		
TOTAL (excl. no reply)	2,068		

Use of Force

Monitoring Forms : 1st Jan 2019 to 31 Mar 2019 : 2121 respondents

Is the subject mentally disabled? (*officer perceived*)

	Number	% of total	
Yes	258	12.5%	258
No	1,809	87.5%	1,809
<i>No reply</i>	5		
TOTAL (<i>excl. no reply</i>)	2,067		

Use of Force

Monitoring Forms : 1st Jan 2019 to 31 Mar 2019 : 2121 respondents

Section Five : Injuries to Staff

Were you physically injured during this incident?

	Number	% of total	
Yes	155	7.3%	155
No	1,966	92.7%	1,966
TOTAL RESPONDENTS	2,121		

IF YES:

Do you believe the injury you received was as a direct result of the subject **INTENTIONALLY** attempting to assault you?

	Number	% of total	
Yes	60	39.0%	60
No	94	61.0%	94
<i>No reply</i>	1		
TOTAL (excl. no reply)	154		

Was your injury level:

	Number	% of total	
Minor	153	98.7%	153
Severe	2	1.3%	2
<i>No reply</i>	0		
TOTAL (excl. no reply)	155		

Was medical assistance provided?

	Number	% of total	
Yes	19	12.3%	19
No	136	87.7%	136
<i>No reply</i>	0		
TOTAL (excl. no reply)	155		

Use of Force

Monitoring Forms : 1st Jan 2019 to 31 Mar 2019 : 2121 respondents

Section Six : Injuries to Subject

To the best of your knowledge and at the time of completing this form, did the subject receive injuries as a result of your use of force?

	Number	% of total	
Yes	112	5.4%	112
No	1,853	89.4%	1,853
Unknown	107	5.2%	107
TOTAL RESPONDENTS	2,072		

IF YES:

To the best of your knowledge and at the time of completing this form, what level of injury did the subject receive from this incident, relevant specifically to your use of force?

	Number	% of total	
Minor	108	96.4%	108
Severe	4	3.6%	4
Death	0	0.0%	0
TOTAL RESPONDENTS	112		

Was medical assistance offered?

	Number	% of total	
Yes	0	0.0%	0
No	112	100.0%	112
TOTAL RESPONDENTS	112		

Was medical assistance provided?

	Number	% of total	
Yes	64	57.1%	64
No	48	42.9%	48
TOTAL RESPONDENTS	112		

Use of Force

Monitoring Forms : 1st Jan 2019 to 31 Mar 2019 : 2121 respondents

Section Seven : Outcome

What subsequently happened to the subject? *[Please tick all that apply]*

NOTE: multi-choice so may sum to greater than 100%	Number	% of respondents	
Made off / escaped	12	0.6%	12
Arrested	1,518	73.4%	1,518
Hospitalised	107	5.2%	107
Detained - Mental Health Act	211	10.2%	211
Fatality	0	0.0%	0
Other	349	16.9%	349
<i>No reply</i>	4		
TOTAL RESPONDENTS	2,068		